



Japan Quilt Tour 2025

5 - 17 November 2025

Our Japan Quilt Tour offers the holiday of a lifetime for quilt, patchwork and embroidery enthusiasts. On tour you will be delighted and astonished by the quality of Japanese craftsmanship.



Japan Journeys is collaborating once again with Judi Mendelssohn to bring you a quilting tour to Japan timed to coincide with the *World Quilt Festival*.



Our Expert

A former Editor for *British Patchwork & Quilting* magazine, Judi Mendelssohn gives talks and teaches patchwork workshops and classes around the UK and abroad.

Judi will lead some hand sewing projects during the tour and share her knowledge of Japanese quilts, fabrics and techniques along the way.

Judi Mendelssohn



Japan Quilt Tour 2025

Itinerary

5-6 November: UK - Kyoto

Fly overnight from London Heathrow to Osaka (Kansai International Airport) with a change of plane en route. Transfer by private coach to our hotel in central Kyoto for 4 nights.

7 November: Kyoto

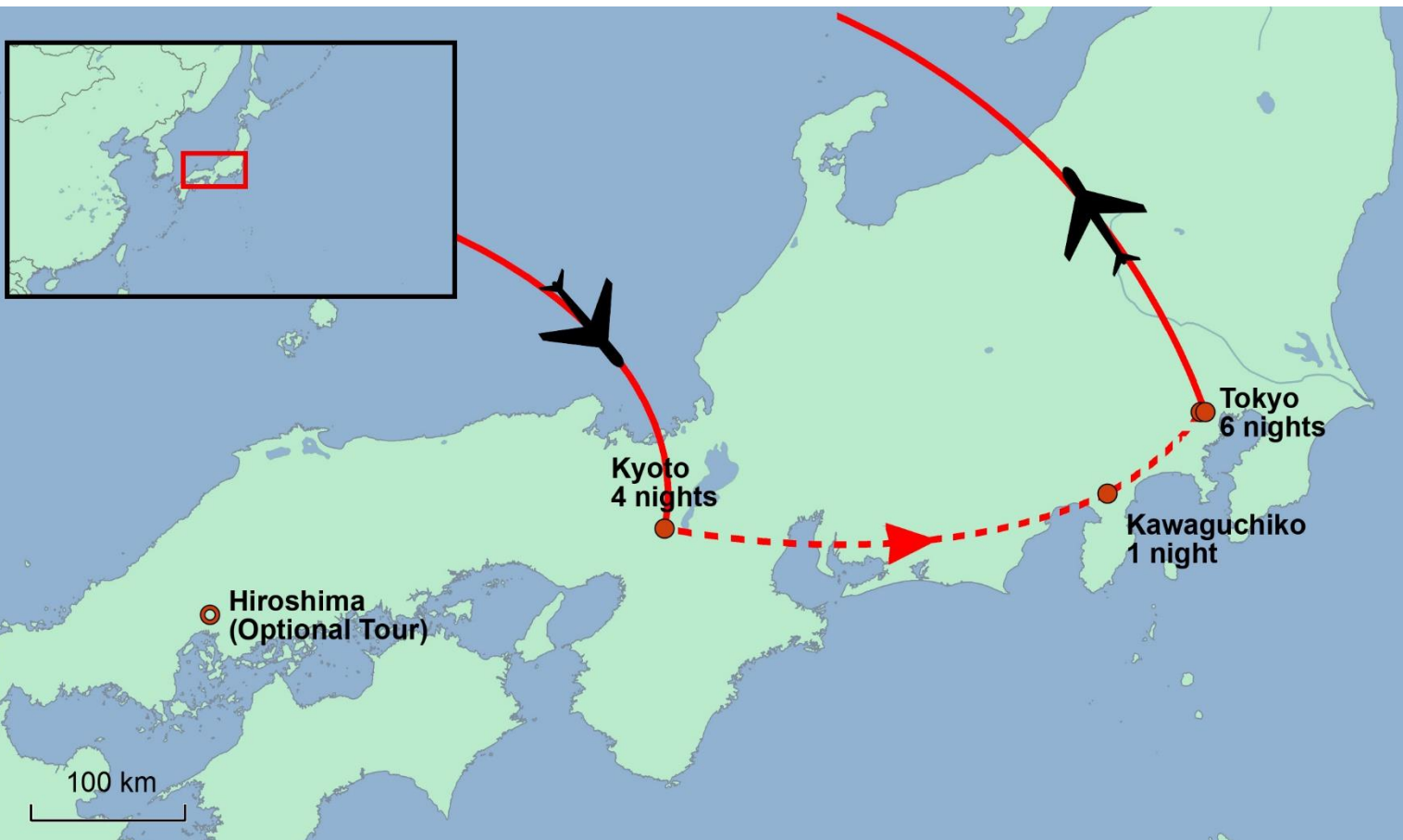
Enjoy a full-day tour by private coach around this beautiful city. Visit the majestic Temple of the Golden Pavilion and its gardens. Then we go on to the atmospheric Sanjusangendo Temple, which contains 1001 gilded statues of the Buddhist Goddess of Mercy. After lunch, enjoy a Shibori Dyeing Class. Enjoy a Welcome dinner tonight.

8 November: Kyoto

Today we start with a little walking tour of the local covered food market. Visit the famous needle shop and a superb local fabric shop.

9 November: Free Day or Optional Tour

Enjoy a full day at leisure in Kyoto. Alternatively, you may wish to join an optional day trip by Bullet Train to Hiroshima and the nearby beautiful island of Miyajima with lunch included.



An Insight into Itchiku Kubota Art Museum

久保田一竹美術館

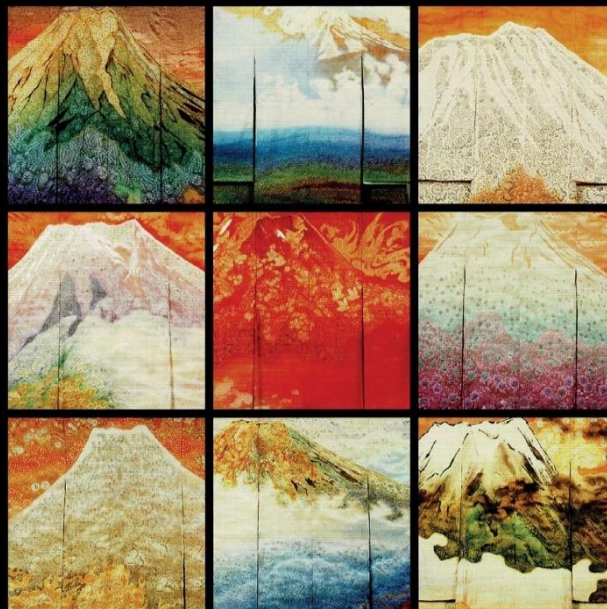
Itchiku Kubota opened his museum in Kawaguchi-ko, Japan in 1994. By the age of 40 he decided to devote himself to creation of original “Tsujigahana”, a Japanese fabric dyeing technique that originated in the Muromachi era (1336 to 1573). After 20 years of experience, he mastered “Itchiku Tsujigahana”, his original technique that expressed clear, beautiful, yet subtle colours, by repeated dyeing and washing in water each time.

Located near Lake Kawaguchi, with a panoramic view of Itchiku’s beloved Mount Fuji, the museum permanently showcases some of his artistic creations and invites visitors to discover the artist who created them.



Exploring these Gaudi inspired buildings, visitors discover Itchiku Kubota at his heart and share his passion for primitive arts and crafts in a peaceful shrine of Nature created by the artist’s vision.

On site, enjoy the beautiful garden surrounding the Museum and end the wonderful kimono experience with a traditional Japanese tea break in Itchiku Kubota's former workshop.





Itinerary

10 November: Kyoto – Itchiku Kubota Museum (Kawaguchiko)

After check-out, we depart from Kyoto and board the fantastic Bullet Train to Mishima. From here, we take a private coach to the stunning Itchiku Kubota Museum which is located near Lake Kawaguchi offering you wonderful panoramic views of Mt. Fuji, beloved by Itchiku. Itchiku is famous for his artistic kimonos inspired by a long lost 16th century technique called tsujigahana (a tie-dyeing technique). After your visit, we will check into a lovely nearby lakeside resort-hotel in Kawaguchiko* tonight where you can enjoy a delicious included dinner.



11 November: Kawaguchiko – Tokyo

Relax and explore your surroundings in beautiful Kawaguchiko before we reboard the Bullet Train to Tokyo where we will check in to our hotel for 6 nights.



12 November: Tokyo

In the morning, we transfer by public transportation to serene Meiji Shrine and lively Harajuku. You can explore nearby Harajuku and have lunch. In the afternoon, we will head back to Shinjuku and visit an array of craft and fabric shops including Bingoya and Okadaya.

13 November: World Quilt Festival

After breakfast, attend the wonderful opening day of World Quilt Festival and enjoy the rest of the day there.

14 November: Free Day or World Quilt Festival

Enjoy a full day of leisure in Tokyo. Alternatively, you may wish to spend another day at the World Quilt Festival in Yokohama.

15 November: Tokyo

Today we transfer by private coach to explore Tokyo. We will visit bustling Sensoji Temple and then spend most of your day in Nippori Fabric Town – a fantastic centre for speciality fabric stores. With over 100 stores you are bound to find whatever you are looking for at a reasonable price.

16 November: Visit Sachiko Yoshida

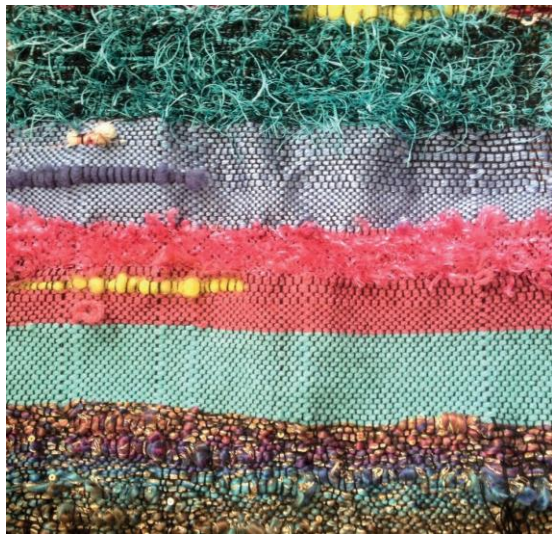
Today we will visit the famous Japanese quilt-maker Sachiko Yoshida who will explain and show us her beautiful quilt and kimono collection. Tonight enjoy a Farewell dinner.



17 November: Return to UK

Sadly, it is time to say “sayonara” and we will transfer to Narita International Airport (Tokyo) by private coach to depart for home.

**Given the limited availability of resort-hotel rooms, you will share Twin rooms on 10 November for 1 night, irrespective of the Single Room Supplement, which applies for the other 10 nights of the tour, but not the night of 10 November.*



Price Includes:

- Economy Class flights (with a change of plane en route)
- 11 nights' hotel accommodation with breakfast daily
- Bullet Train tickets from Kyoto – Mishima and Mishima - Tokyo
- Airport Transfers in Japan for those *arriving and departing with the main group*
- One full-day & one half-day private air-conditioned coach tour of Kyoto
- One half-day private air-conditioned coach tour of Tokyo
- Day trip to World Quilt Festival by private air-conditioned coach on the opening day
- Day trips to Itchiku Kubota Museum & Sachiko Yoshida by private air-conditioned coach
- All local train and subway fares for sights visited
- Sightseeing and entrance fees to all named attractions on tour
- Shibori Dyeing class
- 2 Lunches, Welcome and Farewell Dinners & Dinner in Kawaguchiko
- 1 standard sized baggage transfer from Kyoto – Tokyo
- Services of a knowledgeable Japan Journeys Guide throughout

Not Included In Price:

- Travel Insurance (available on our website for UK residents)
- Lunches and dinners (other than those mentioned above)
- Optional day trip to Hiroshima

All price estimates are based on a minimum number of passengers travelling in 2025.

PRICE:

£5,295.00

per person on a sharing basis

LAND-ONLY PRICE:

£4,295.00

per person on a sharing basis
(not including flights. non-UK passengers only)

SINGLE ROOM SUPPLEMENT*:

£575.00

*For 10 of the 11 nights of the tour. See note at the bottom of page 5 for more

**OPTIONAL DAY TRIP TO HIROSHIMA:

£245.00

per person

**Minimum numbers apply

To confirm a place on the trip, a deposit of 10% per person must be paid. The balance of the price of the trip must be made 12 weeks prior to departure.

Japan Journeys Limited

Unit 16, 64-66 Wingate Square, London SW4 0AF
 Tel: +44 (0) 208 064 2771
 info@japanjourneys.co.uk
 www.japanjourneys.co.uk

